




**HOLIDAY SPEED LIMIT
6 KNOTS (all ships and PWC)....**

SUMMER HOLIDAY
1 December to 31 January

EASTER HOLIDAY
Good Friday to Easter Monday (the Public Holidays)
and including the Easter Holiday whether before,
following or inclusive of the Public Holidays.

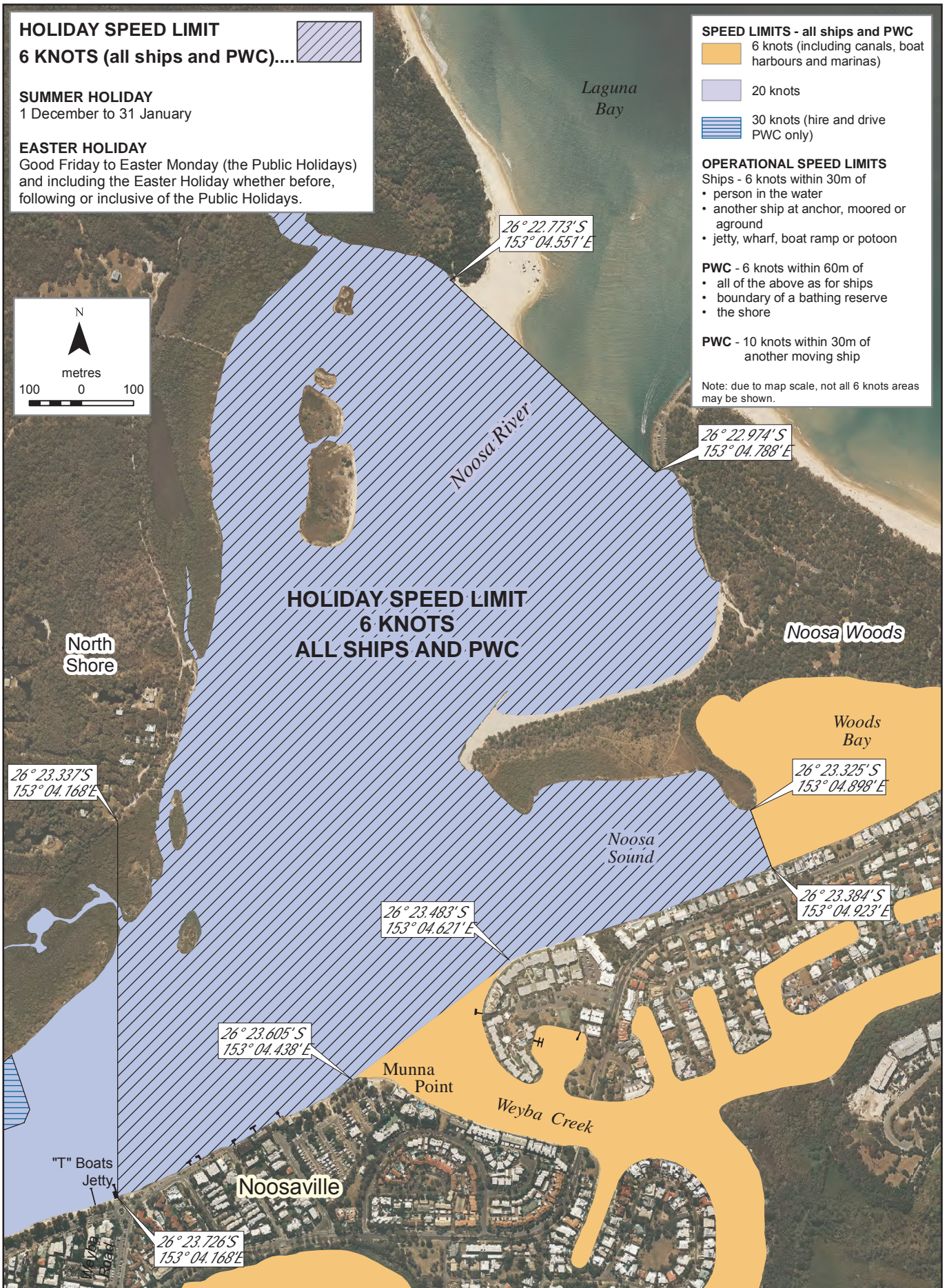
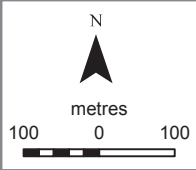
- SPEED LIMITS - all ships and PWC**
-  6 knots (including canals, boat harbours and marinas)
 -  20 knots
 -  30 knots (hire and drive PWC only)

- OPERATIONAL SPEED LIMITS**
- Ships - 6 knots within 30m of
- person in the water
 - another ship at anchor, moored or aground
 - jetty, wharf, boat ramp or potoon

- PWC - 6 knots within 60m of**
- all of the above as for ships
 - boundary of a bathing reserve
 - the shore

- PWC - 10 knots within 30m of another moving ship**

Note: due to map scale, not all 6 knots areas may be shown.



**HOLIDAY SPEED LIMIT
6 KNOTS
ALL SHIPS AND PWC**

Map: S8sp-36

Horizontal datum: GDA94
Vertical datum: LAT
Projection: UTM (zone 56)

Prepared 06 March 2015
Maritime Safety Queensland
Spatial Services

Transport Operations (Marine Safety) Act 1994, section 206A

**NOOSA RIVER
HOLIDAY SPEED LIMIT
6 knots - all ships and PWC**

© The State of Queensland 2015
(Transport and Main Roads)
Licence available to view at
<http://creativecommons.org/licenses/by-nc-nd/3.0/au>

